



## C400 Cloud Attached Storage® Appliance

### All-in-One Network Attached Storage and Cloud Services Gateway

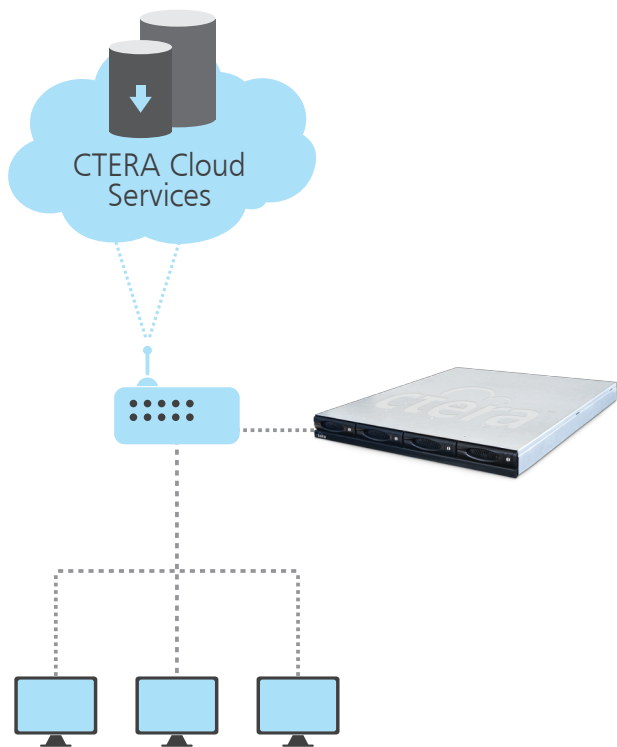
- Integrated On-Site and Off-Site Data Protection
- Robust Enterprise-Grade NAS Features
- Remote Access & Management



#### 4-Bay Rack-Mount Hybrid Data Protection Appliance with Integrated Cloud Services

The C400 Cloud Attached Storage appliance from CTERA Networks combines Network Attached Storage (NAS) with hybrid on-site and off-site data protection. The C400 combines lightning-fast local backup, with a cloud-based copy for disaster recovery. With no client software required, the CTERA C400 can rapidly be installed in any office setting, from SMBs to corporate environments.

Local and Cloud Backup	The C400 performs fast on-site backup and restore, while the integrated cloud backup service provides an off-site copy for disaster recovery.
Complete Data Protection	Protect all desktops in the network using a single device - no software required. Back up roaming laptops and remote users using the lightweight managed CTERA Agent.
Robust Network Storage	The C400 is a full-fledged NAS appliance that supports up to 8TB of RAID 5/6 storage, inline volume encryption, thin provisioned snapshots, iSCSI and additional enterprise-grade features.
Centralized Management	With CTERA Portal, service providers and enterprises can manage and monitor any number of devices from a unified Web console.
Access Anywhere	Users can access local and cloud-stored files from anywhere, using standard file sharing protocols, or over the Web.



Connect the C400 to your router for instant hybrid local & cloud storage, data protection and collaboration



The C400's easy-to-use Web interface

## About CTERA

CTERA™ Networks revolutionizes storage and data protection for SMBs and enterprise branch offices with Cloud Attached Storage®, a hybrid solution that combines secure cloud storage services with on-premises storage appliances for a seamless user experience. CTERA provides a cloud services platform that enables service providers and IT resellers to quickly deliver cloud storage, hybrid local/offsite data protection and collaboration as managed services to their customers. For more information, visit [www.ctera.com](http://www.ctera.com).

## Appliance Features

- Clientless backup of Desktop PCs and file servers
- Roaming laptop backup with CTERA PC Agent
- Application-aware server backup with optional CTERA Server Agent
- RAID 0/1/5/6 and JBOD storage
- NTFS/FAT32/EXT3/NEXT3 file systems
- UPnP and Bonjour discovery
- Windows File Sharing (CIFS), Apple File Sharing (AFP), Time Machine, NFS, rsync
- Resizable logical volumes
- Thin-provisioned multiple snapshots
- FTP server
- Volume encryption AES-256
- iSCSI target
- Microsoft Active Directory support
- Role-based user access control
- User disk quotas
- S.M.A.R.T hard drive monitoring
- Secure remote management & real-time monitoring
- Custom email alerts and reporting
- Full-text search
- Web-based user interface
- Requires Microsoft Internet Explorer 7.0, Mozilla Firefox 3.0, Chrome 5.0 or newer

## Cloud Service Features

- Optimized incremental cloud backup with data compression
- Retains previous file versions
- Scheduled and on-demand backup
- Folder & attribute-based backup sets
- Restore methods: Windows Previous Versions, Virtual cloud drive, Local Web interface or online via CTERA Portal
- Offline seeding option for assisted initial backup
- Secure Web-based portal provides access to backups and local files from anywhere
- Cloud Folders with read/write capability
- Cloud file sharing with time-limited email invitations
- Backups secured using 256-bit AES encryption and SHA-1 fingerprints, with user-specific secret passphrase
- All communications secured with 128-bit SSL (Secure Sockets Layer)

## CTERA Agent Features

- Roaming laptop backup
- Disk-level ("bare metal") backup, recovery to similar hardware or VM
- Optional CTERA Server Agent for Microsoft Exchange, SQL Server, Active Directory backup and recovery
- Locked files backup
- Centrally managed from the C400 Web interface
- PC Agent requires Windows 7, Vista or XP
- Server Agent requires Windows 7, Vista, 2003 SP1, 2008 Server or 2008 R2 Server

## Hardware Specifications

- 4 x 3.5" SATA Hot Swap hard drive
- FCC, CE, RoHS, WEEE compliance
- Storage capacity up to 8TB
- Operating environment 10°-40°C, Humidity 10%-85% (non-condensed)
- 2 x USB 2.0 for storage expansion
- Dimensions: 44(H) x 446.4(W) x 506 (D) mm – 1U rack mount
- 2 x Gigabit Ethernet ports
- Weight 7.8Kg (excluding hard drives)
- Power consumption 220W max

### CTERA Networks US

2225 E. Bayshore Road, Suite 200  
Palo Alto, CA 94303  
Tel: (650) 227-4950

### CTERA Networks Ltd.

24 Imber St., Petah Tikvah  
Israel 49511  
Tel: +972-3-919-2061